

£1,300 pcm



266 Burnley Road, Cliviger, Lancashire. BB10 4SP

- Rent in advance - £1300
- Deposit in advance - £1300
- EPC - E
- Council Tax - Band C



PROPERTY DESCRIPTION

| Countryside location |

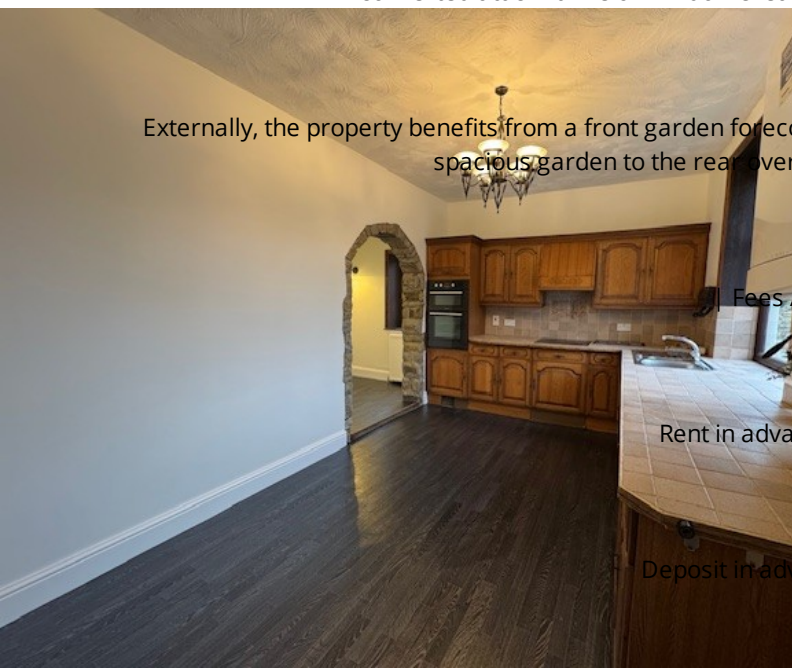
Situated in the idyllic town of Cliviger, we offer a spacious throughout 3 bedroom semi detached property with additional study & converted loft room.

With an entrance vestibule and hallway, leading to the front reception room with feature fireplace/surround, a further rear dining room with fireplace, spacious fully fitted dining kitchen with integrated features, an additional dining snug and understairs storage.

The first floor landing leads to a generously sized main bedroom with fitted wardrobe and storage space, a further 2 bedrooms, an additional office room, 4 piece bathroom suite with separate shower and access to the attic via a spiral staircase.

A converted attic with Velux window & eaves storage available to the second floor.

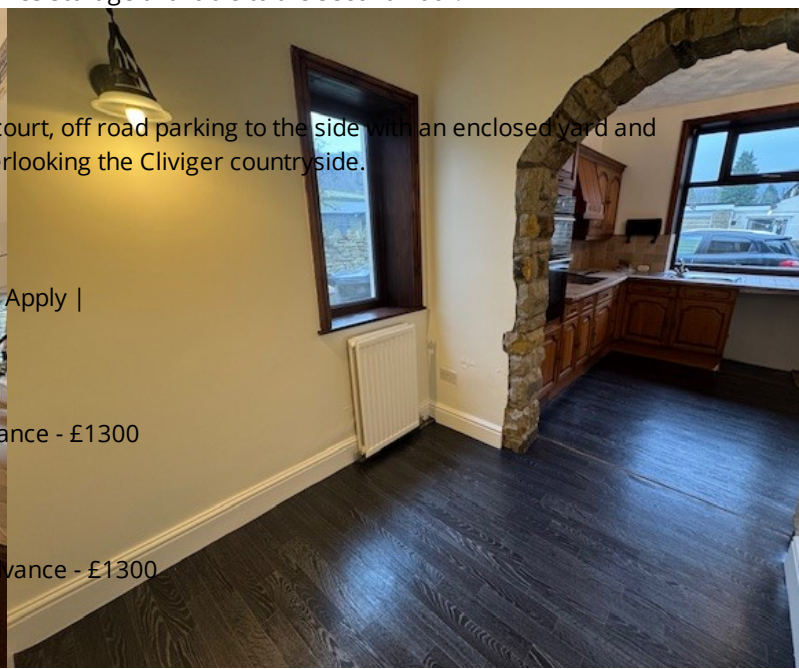
Externally, the property benefits from a front garden forecourt, off road parking to the side with an enclosed yard and spacious garden to the rear overlooking the Cliviger countryside.



| Fees Apply |

Rent in advance - £1300

Deposit in advance - £1300



ROOM DESCRIPTIONS

GROUND FLOOR

Entrance vestibule & hallway

Front reception room

Rear reception room

Dining kitchen

Additional dining snug

Understairs storage

First floor

Main bedroom

Bedroom 2

Bedroom 3

Bathroom

Second floor

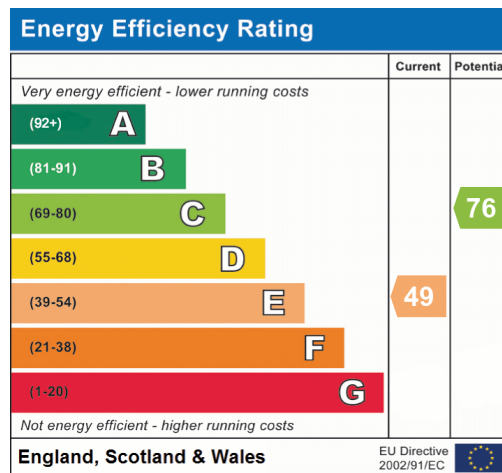
Fully converted attic room accessed via spiral staircase

External

Front patio, enclosed side yard and garden to rear

Off road parking to the side





Burnley
31, Parker Lane, Burnley, BB11 2BU
01282 427445
info@jonsimon.co.uk