

£290,000
Leasehold



JS
JON SIMON
ESTATE AGENTS

JS
JON SIMON
ESTATE AGENTS



Features

- A WELL PRESENTED THREE BEDROOM SEMI-DETACHED FAMILY HOME
- FRONT PORCH & HALLWAY
- SPACIOUS LOUNGE & DINING ROOM WITH FEATURE FIREPLACE
- EXTENDED DINING KITCHEN
- SOLD WITH NO ONWARD CHAIN
- SITUATED ON A VERY POPULAR LOCATION IN A CUL-DE-SAC CLOSE TO ALL LOCAL AMENITIES AND GOOD SCHOOLS
- FLAGGED DRIVEWAY FOR OFF ROAD PARKING
- FRONT AND REAR GARDENS
- FULLY DOUBLE GLAZED & GAS CENTRAL HEATING
- VIEWING HIGHLY RECOMMENDED AND STRICTLY BY OUR RAMSBOTTOM OFFICE

Summary of Property

**** SOLD WITH NO ONWARD CHAIN ** FULL WIDTH REAR KITCHEN EXTENTION ** QUIET CUL-DE-SAC LOCATION ** PERFECT HOME FOR GROWING FAMILIES **** JonSimon Estate Agents are pleased to present this extended three-bedroom semi-detached family home to the market. Ideally located in Ramsbottom, this property offers easy access to excellent schools, local amenities, motorway links, and is nestled in a quiet cul-de-sac. The light and spacious accommodation briefly comprises a front porch, an entrance hallway with a cloakroom, leading into a spacious family lounge with an open-plan formal dining area. The property also features a superb fully fitted extended dining kitchen. Upstairs, the landing leads to three bedrooms, including two doubles, along with a modern three-piece shower room. Additional benefits include UPVC double glazing and gas central heating. Externally, the front of the property features a flagged driveway providing off-road parking for up to two vehicles alongside a lawned garden. To the rear, there is a private, low-maintenance garden with patio areas. Viewing is highly recommended and strictly by appointment through our Ramsbottom office. Mortgage advice is available.

Tenure: Leasehold

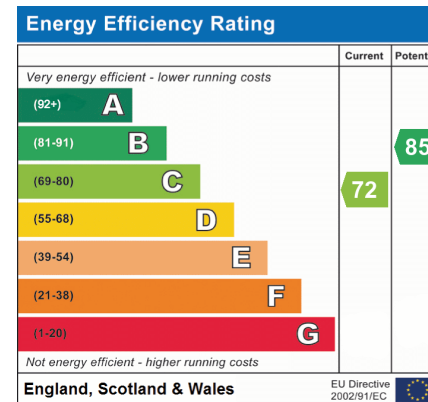
Local Authority/Council Tax

Bury Council: C Annual Amount: £2034.48 Approx.

Flood Risk: Very Low

Broadband availability

Ultrafast: Download: 1000Mbps Upload: 1000Mbps



Local Authority

Bury Council
 Band C
 Tax Band Amount: £2034.48

Room Descriptions

Ground Floor

Front Porch

UPVC double glazed front door and windows, tiled flooring and ceiling point.

Hallway

Storage cupboard, ceiling point and stairs leading to the first floor landing.

Lounge & Dining Room

UPVC double glazed front window, modern coal effect gas fire with feature surround, TV point, radiators, wall lights, ceiling coving and ceiling points.

Extended Dining Kitchen

A range of wall and base units with complementary worksurface, four ring gas hob, double electric oven, plumbed for washing machine and dryer, parts tiled walls, two bowl sink unit with drainer, radiator, ceiling coving, Combi boiler, storage cupboard, breakfast bar, ceiling spotlights, double glazed sliding patio door, UPVC double glazed rear window and back door.

First Floor

Landing

UPVC double glazed side window, loft access and ceiling point.

Bedroom One

UPVC double glazed front window, radiator, TV point and ceiling point.

Bedroom Two

UPVC double glazed rear window, radiator ceiling point.

Bedroom Three

UPVC double glazed window, radiator and ceiling point.

Shower Room

A modern three-piece white suite comprising of a large walk-in shower unit, low-level WC, wash hand basin with storage cupboard underneath, chrome towel radiator, electric wall mounted mirror, extractor unit, ceiling spotlights, tiled floor and walls, UPVC double glazed rear window.

Outside

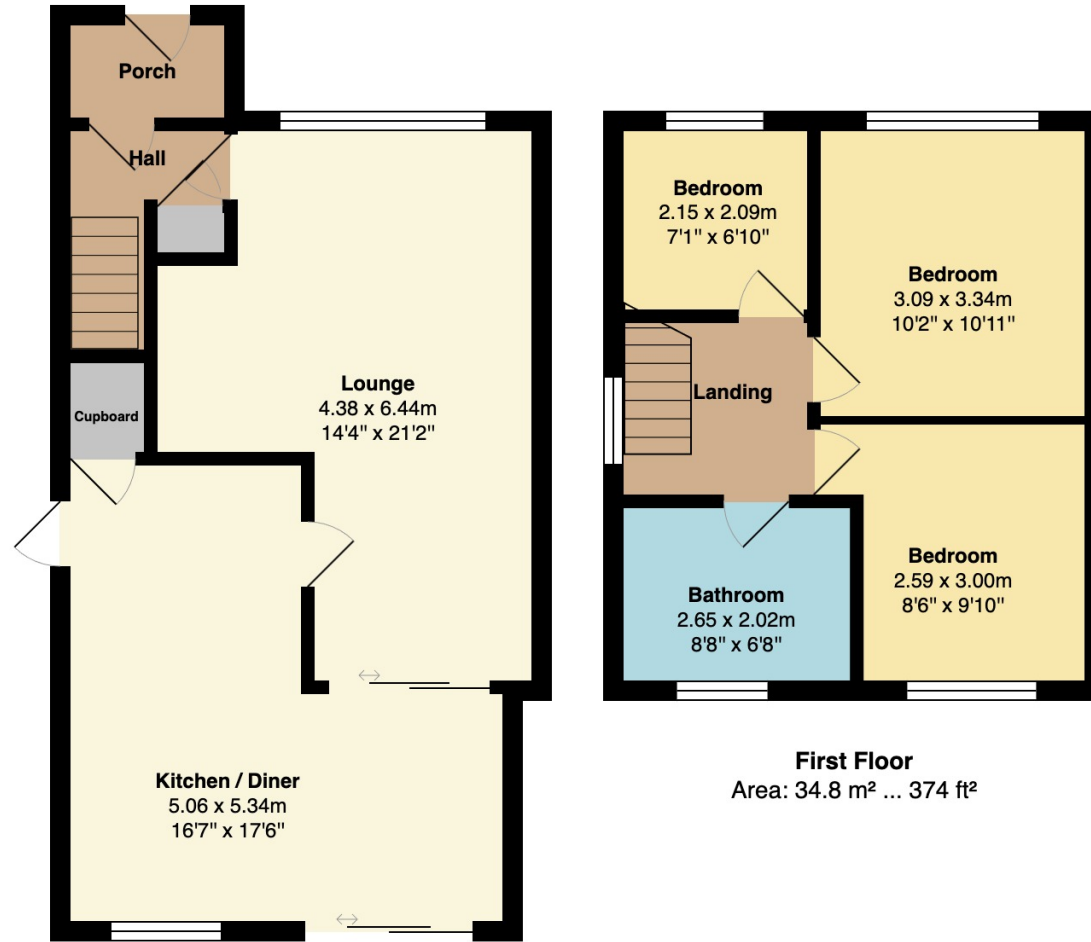
Gardens & Parking

Front: A large flagged driveway for several cars, lawn area with borders and shrubs.

Rear: A paved low maintenance rear garden, brick built barbecue, borders and shrubs, wooden shed and fence panel surround.



Floorplan



Ground Floor
Area: 51.3 m² ... 552 ft²

First Floor
Area: 34.8 m² ... 374 ft²

Total Area: 86.1 m² ... 926 ft²

General Disclaimer

Every care has been taken with the preparation of these Sales Particulars but complete accuracy cannot be guaranteed. If there is any point which is of particular importance to you, we will be pleased to check the information for you. These Particulars do not constitute a contract or part of a contract.

Measurements

All measurements quoted are approximate.

Fixtures, Fittings & Appliances

The Fixtures, Fittings & Appliances have not been tested, therefore no guarantee can be given that they are in working order.